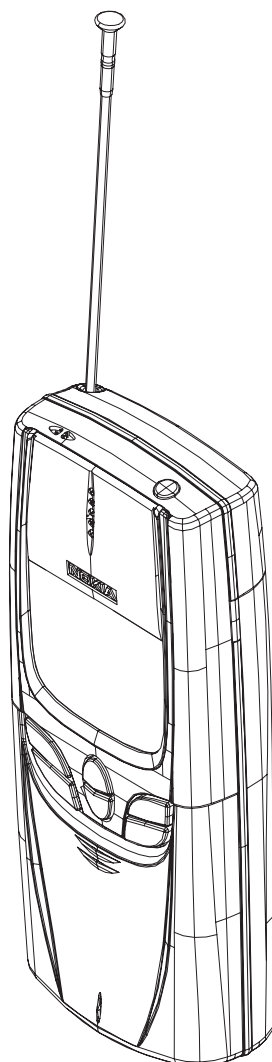


# PAMS Technical Documentation

## NSB-6 Series Transceivers

# Product Variants



**CONTENTS**

Transceiver NSB-6 ..... 3  
    Modules ..... 3  
    Exploded View of Transceiver NSB-6 ..... 4  
    Assembly Parts of NSB-6 ..... 5

## Transceiver NSB-6

The NSB-6 is a dual band transceiver unit designed for the GSM900 (including EGSM) and GSM1900 networks. It is both GSM900 phase 2 power class 4 transceiver (2W) and GSM1900 power class 1 (1W) transceiver.

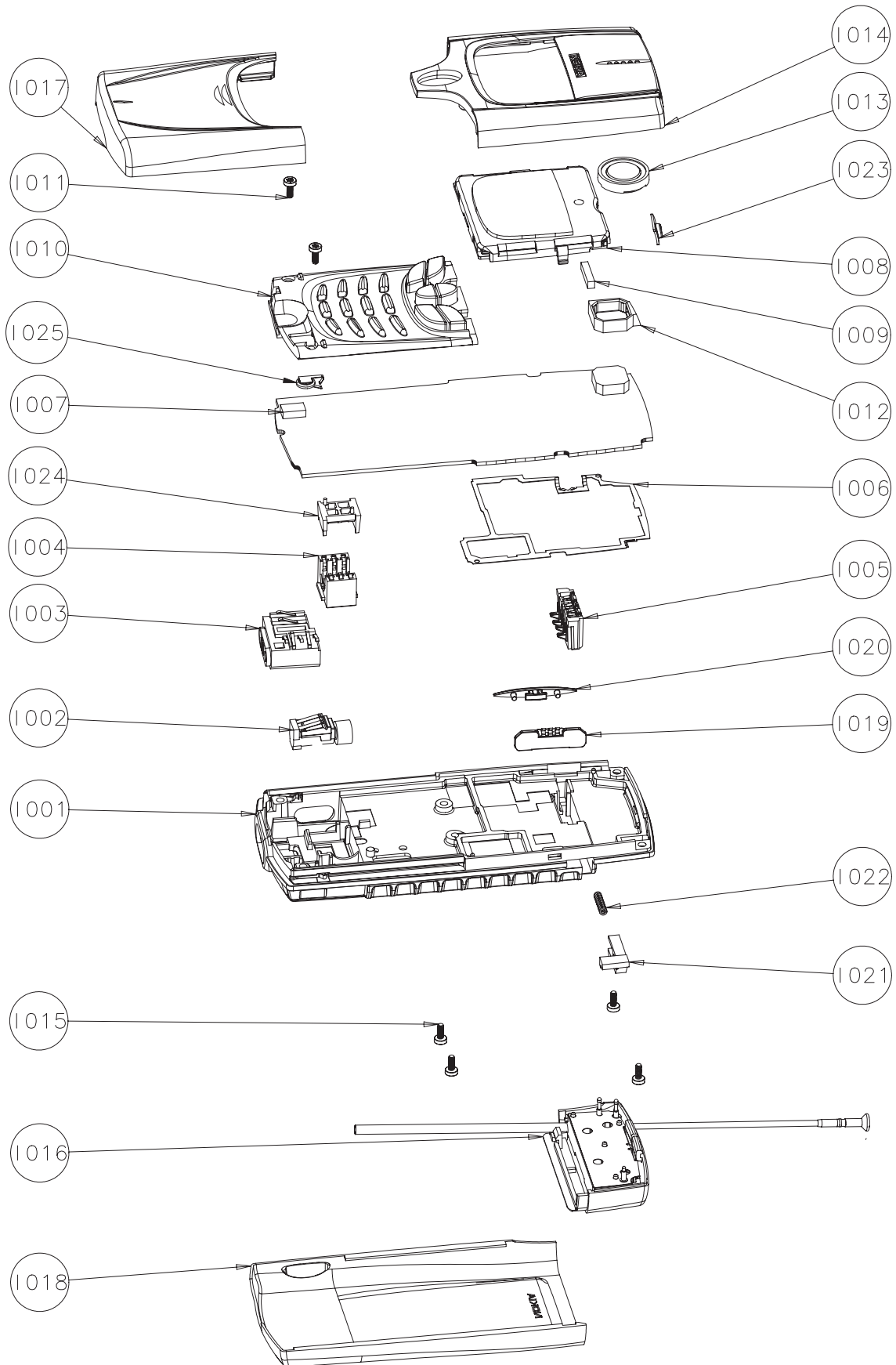
The plug-in SIM (Subscriber Identity Module) card is located inside the phone. SIM card is accessed after removal of metal B-cover and battery.

**NOTE:        The Service Manual is intended for use by qualified service personnel only.**

## Modules

Transceiver NSB-6 Basic	0502513
• system module UP9	0201362
• mechanics MNSB6NY	0262151
• software	0240899
Transceiver NSB-6 8890 Basic (without B-cover)	0503542
• system module UP9	0201362
• mechanics MNSB6NY	0262148
• software	0240899

### Exploded View of Transceiver NSB-6



## Assembly Parts of NSB-6

CIRCUIT REF./ ITEM	Q'TY	CODE	DESCRIPTION	VALUE, TYPE
I001		9456863	Main frame assy	DMC03071
I002		6800033	Vibra motor assy	
I003		5409095	DC & HS connector	
I004		5409117	SIM connector	
I005		5409093	Battery connector	
I006		9510554	Metal gasket	DMD05218
I007		0201362	UP9 radio module	
I008		9490055	LCD module assy	DMC02283
I009		9780250	Connector elastomer silicon stax	
I010		9794028	Keymat module Europe	DMC02259
I011	2	6290073	Screw 1.8x8 remf. T6 DMC03671	<b>(Use 17 Ncm torque)</b>
I012		9480508	Buzzer rubber	DMD04781
I013		5140177	Speaker + spring 103±3 dB	
I014		9456751	A-cover assy	DMC02282
I015	4	6150029	Screw M1.6x4.5 flat head 0.8mm	<b>(Use 15 Ncm torque)</b>
I016		0660209	Antenna pifa + whip EGSM900/1900	
I017		9456750	Slide assy	DMC01904
I018		9590005	B-cover assy	DMC02919
I019		5219019	Volume switch	DMD04464
I020		9451506	Volume key	DMD04466
I021		9460306	Latch	DM04432
I022		9510516	Latch spring	DMD04937
I023		9790404	Power key	DMD05375
I024		9660147	Twin Rip	DMD06257
I025		4700119	RTC-Battery	

This page intentionally left blank.